

NVE

National Vacuum Equipment

■ Part of Atlas Copco Group



1600 HEAVY DUTY VACUUM BLOWERS PRODUCT CATALOG

800-253-5500
www.natvac.com

Challenger Series
VACUUM PUMPS & BLOWERS

1600 High Vacuum Tri-Lobe Blowers **3**

1600 Pro Pak - Side Mount..... **4**

1600 Pro Pak - Top Mount **5**

1600 Top Mount **6**

1600 Diesel Engine Drive..... **7**

Components & Accessories..... **8**



National Vacuum Equipment

■ Part of Atlas Copco Group

800-253-5500

sales@natvac.com

2707 Aero Park Dr. | Traverse City, MI 49686

**NVE Product
Information**



**Condition
of Sales**





MADE IN THE USA

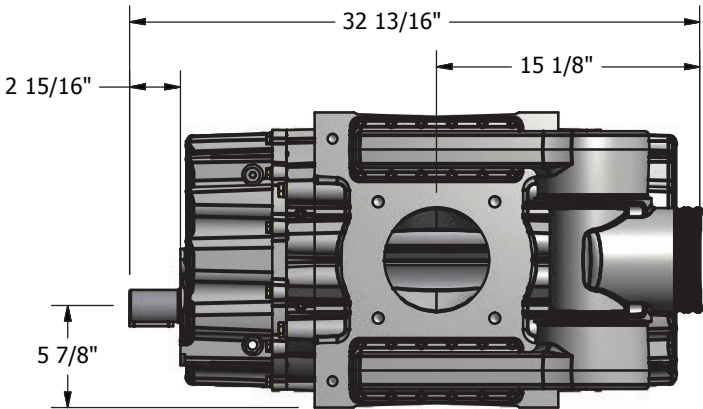
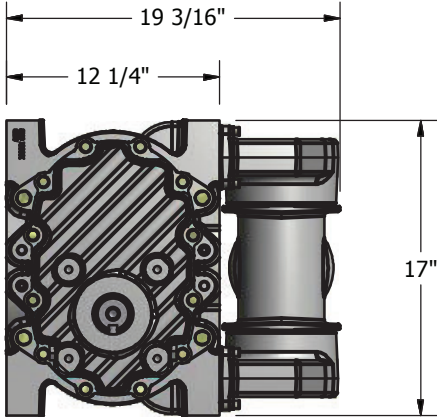
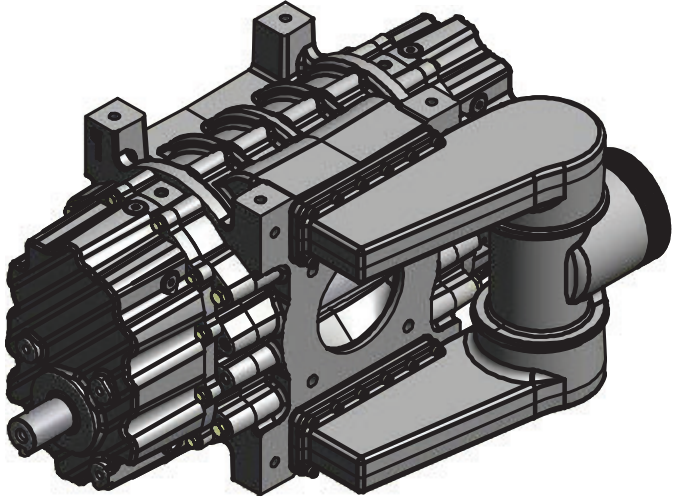
1600 Blower

Features

- Tri-lobe design with precision matching
- Oil-less operation
- Continuous duty performance
- Installation ready
- Ballast manifold available
- Designed, built, and supported in the USA

1600 CHALLENGER BLOWER | SPECIFICATIONS

Air Flow - Free Air	1600 CFM
*Maximum Vacuum	
Maximum Intermittent Pressure	10 PSI
*Operating Speed - Recommended	3600 RPM
HP Required @ 27" HG	95.4
HP Required @ 10 PSI	72.9
Porting Size	6"
Shaft Size (1/2" key)	1 7/8"

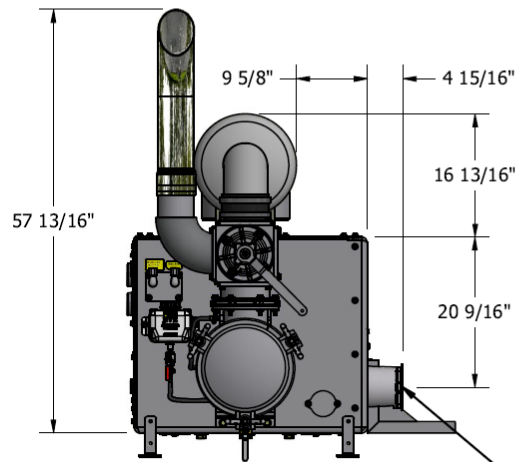
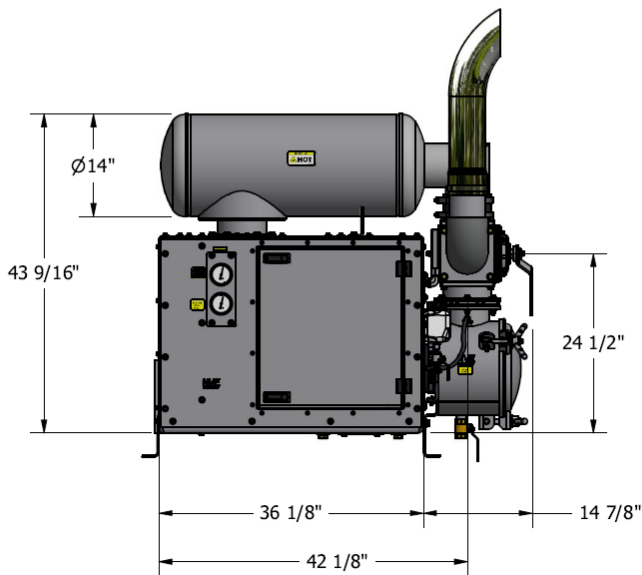
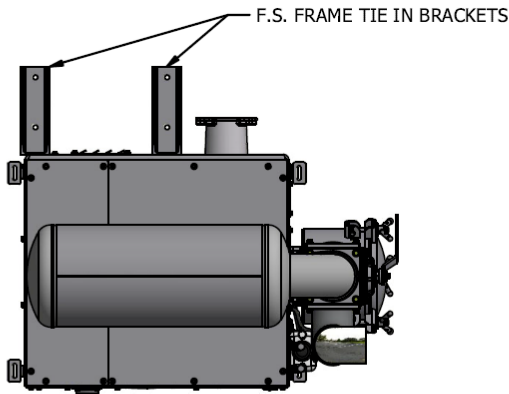
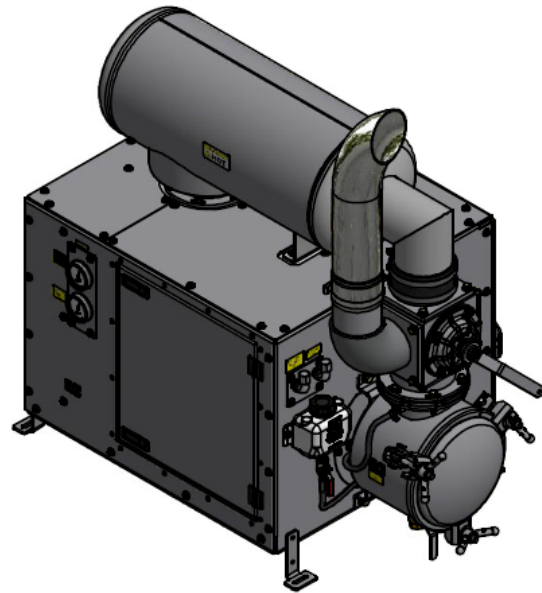


PRODUCT DESCRIPTION	PART NUMBER	WEIGHT
1600 Bare Shaft Blower	CALL	588 lbs
1600 Blower w/Ballast Manifold	CALL	604 lbs

The maximum allowable operating vacuum will vary depending on R.P.M., ambient temperature, altitude and time running. The basic principle to keep in mind is - faster R.P.M., higher air temperature and longer run time all equal more heat in blower. When installing a NVE 1600 blower we recommend a normal R.P.M. of 3600. Other speeds are ok as long as exhaust gas temperatures read on the supplied thermometer do not exceed 380 degrees F.

Features

- Conveniently mounts on the side of the truck frame
- Equipped with 4-way valve, check valve, final filter, exhaust silencer, flushing kit, temperature and vacuum/pressure gauges
- Available in hydraulic or gearbox drive
- Designed, built, and supported in the USA



HYD. ADAPTER - 150-466-003
 MAGNALOY M182682C
 2/4 BOLT SAE "C" FACE
 1600 SHAFT = Ø1.875" W/ 0.5" KEY
 COUPLERS NOT SUPPLIED

PRODUCT DESCRIPTION	PART NUMBER	WEIGHT
1600 Side Mount Package w/ Hydraulic Adapter only (Pictured Above)	147-1600H-007-2	1738 lbs
1600 Side Mount Package w/ Hydraulic Adapter only and Actuator	147-1600H-007-2A	1763 lbs
1600 Side Mount Package w/ Gearbox Drive	147-1600H-008-2	1790 lbs

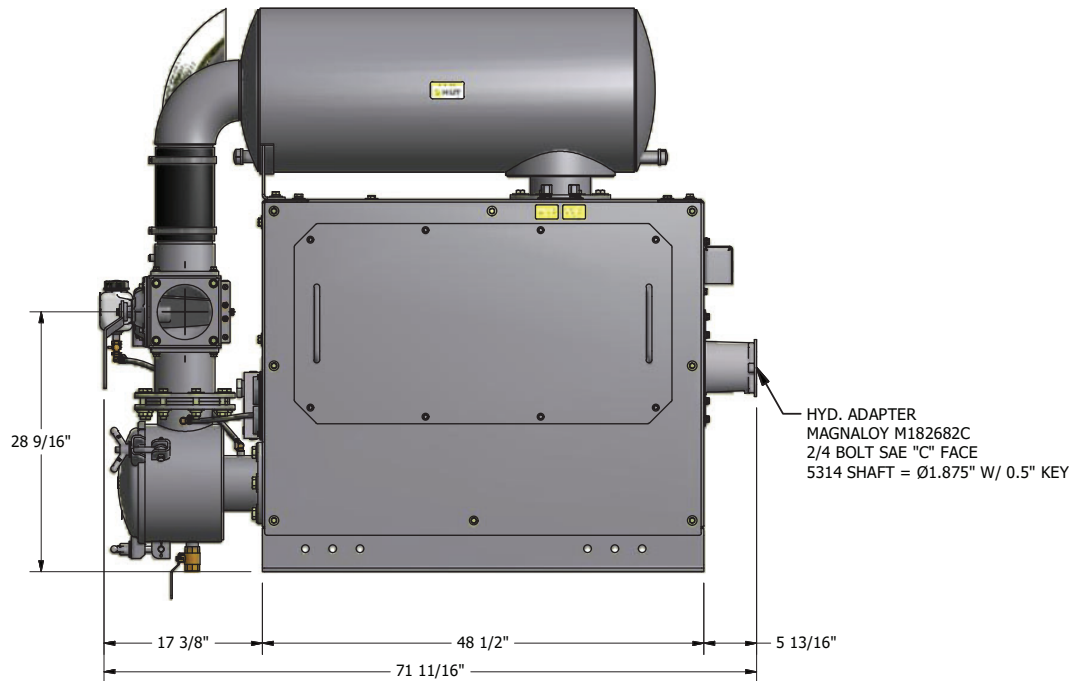
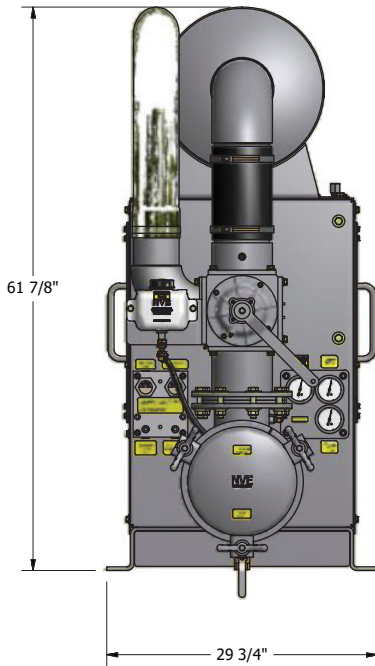
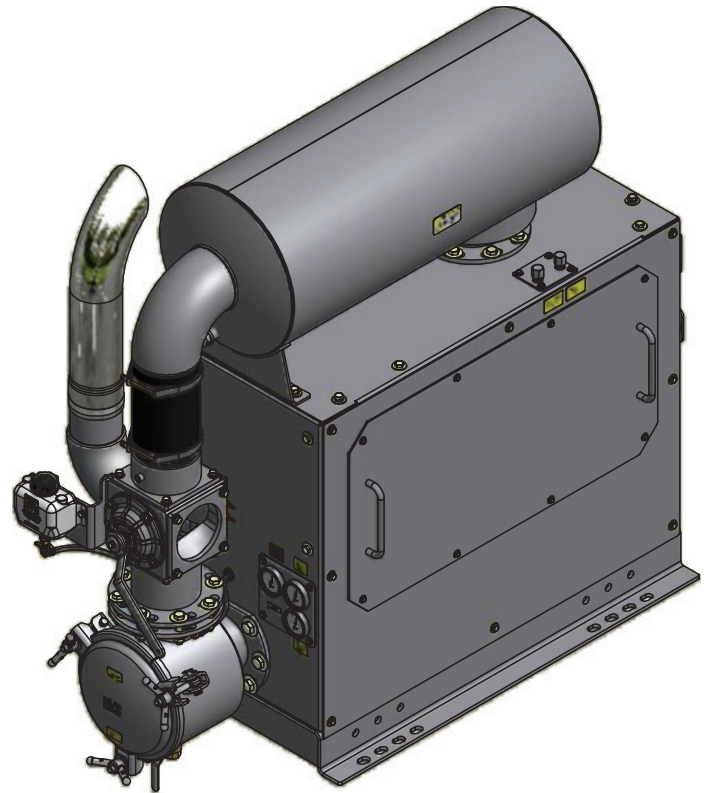


MADE IN THE USA

1600 Pro Pak - Top Mount

Features

- Conveniently mounts behind the cab
- Sound dampening design for quiet operation
- Hydraulic ready
- Equipped with 6" 4-way valve, check valve, final filter, exhaust silencer, flushing kit, temperature and vacuum/pressure gauges
- Easy maintenance - equipped with removable side panels
- Easy accesses to the oil fill and drain ports
- Designed, built, and supported in the USA



PRODUCT DESCRIPTION	PART NUMBER	WEIGHT
1600 Top Mount Hydraulic Drive CW	147-1600H-004	1904 lbs

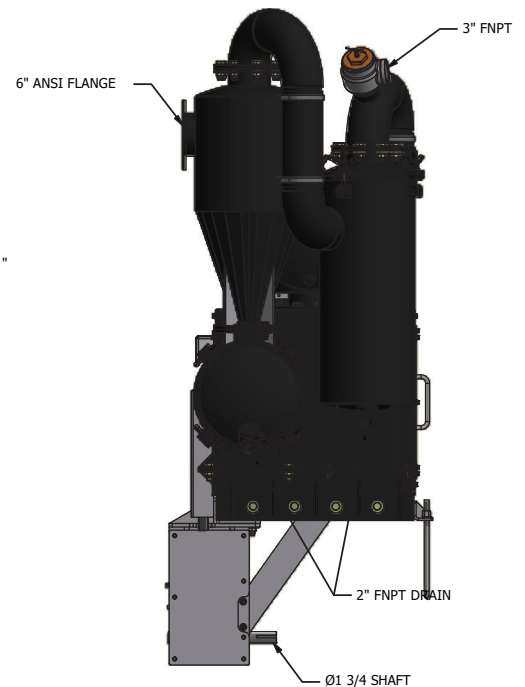
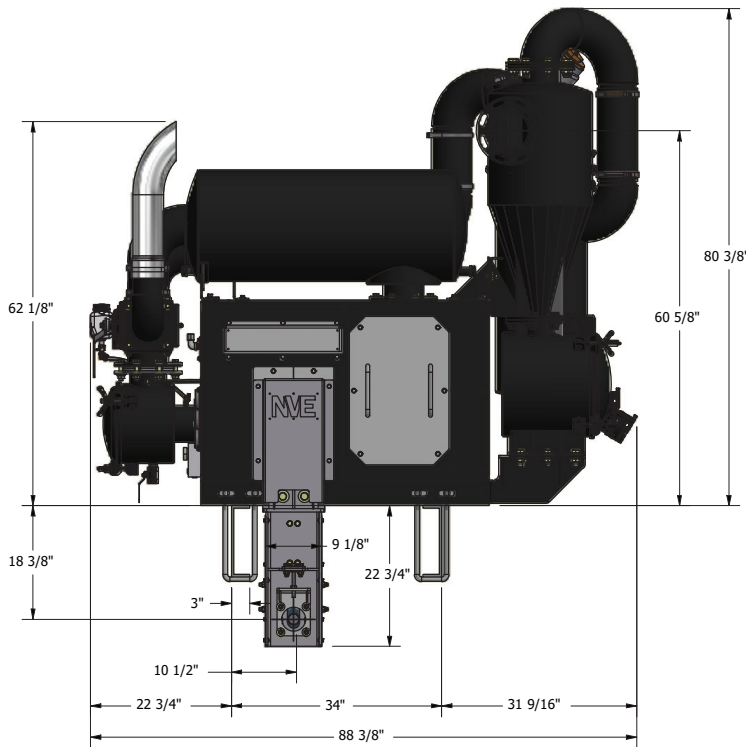
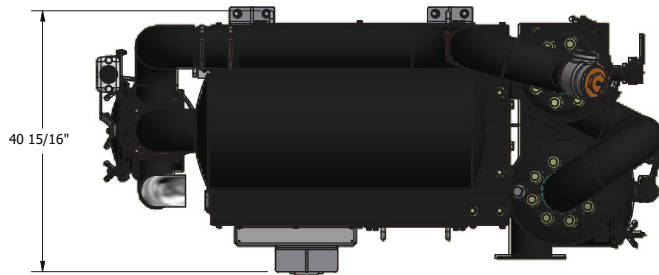
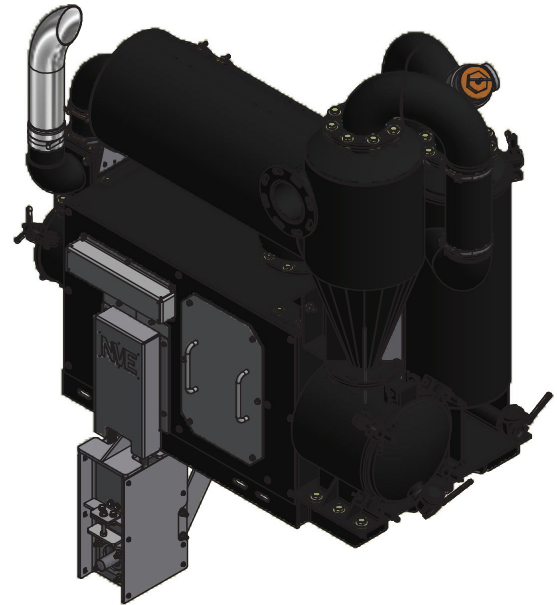
1600 Packages Top Mount

Challenger Series

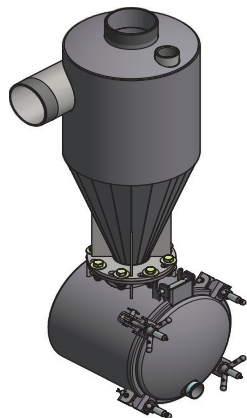
Features

- Conveniently mounts to the truck frame
- Equipped with
 - 6" 4-Way Valve
 - Moisture Trap
 - Stainless Steel Final Filter
 - Air Ballast Silencer & Exhaust Silencer
 - Cyclonic Grit Ridder
 - 3" pressure relief valve set at 10 psi
 - Temperature and vacuum/pressure gauges
- Designed, built, and supported in the USA

1.5 : 1.0 Speed increasing sprocket ratio
 Allow 1 3/4" travel to untension belt



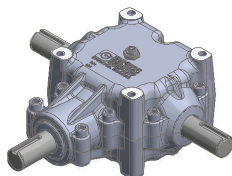
PRODUCT DESCRIPTION	PART NUMBER	WEIGHT
1600 Top Mount Belt Drive CW High Shaft w/ Moisture Trap and Cyclone	147-1600H-009	1842 lbs
1600 Top Mount Belt Drive CCW Low Shaft w/ Moisture Trap and Cyclone (Pictured Above)	147-1600H-010	1842 lbs
1600 Top Mount w/ Hydraulic Adapter only CW w/ Moisture Trap and Cyclone	147-1600H-011	1842 lbs



PRODUCT DESCRIPTION	PART NUMBER	WEIGHT
Cyclone 2400	222-2400-1	327 lbs
- Cyclonic Action Removes Grit and Debris From Airflow - 6" Plumbing		



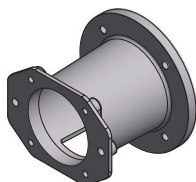
PRODUCT DESCRIPTION	PART NUMBER	WEIGHT
Moisture Trap Carbon	216-250-6NPT-C	186 lbs
- 25 Gallon - 6" NPT		



PRODUCT DESCRIPTION	PART NUMBER	WEIGHT
Gearbox 600 Series 1:2 Ratio Spiral Bevel	422-600-3	61.3 lbs



PRODUCT DESCRIPTION	PART NUMBER	WEIGHT
Hub Dodge or Rexnord E30-1.75" BORE	424-E30-175	-----
Hub Dodge or Rexnord E30-1.875" BORE	424-E30-1875	-----
Element Dodge or Rexnord E30	424-E30-ELE	6.2 lbs



PRODUCT DESCRIPTION	PART NUMBER	WEIGHT
Hydraulic Adapter - SAE C face 2 or 4 bolt	150-466-003	7.2 lbs

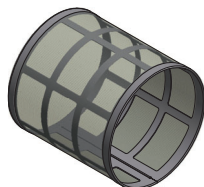
1600 Components & Accessories



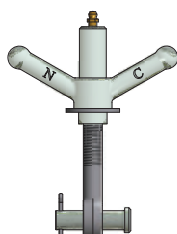
MADE IN THE USA



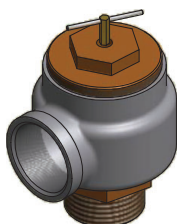
PRODUCT DESCRIPTION	PART NUMBER	WEIGHT
Belt 36MM QTPCII 2000	430-200-016	1 lbs
Belt 36MM QTPCII 2240	430-200-032	2 lbs



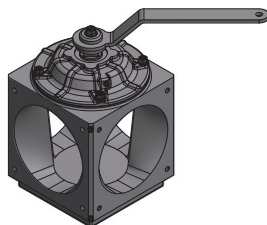
PRODUCT DESCRIPTION	PART NUMBER	WEIGHT
Intake Filter 1600	150-314-008	4 lbs



PRODUCT DESCRIPTION	PART NUMBER	WEIGHT
Wingnut Assy: Wingnut Eyebolt Clevis Cotter, Pin Sold in Sets of 6	284-KIT-C	1.45 lbs
Lubenut Assy: Lubenut, Eyebolt, Clevis, Cotter Pin Sold in sets of 6	284-KIT-CLN	1.55 lbs



PRODUCT DESCRIPTION	PART NUMBER	WEIGHT
Pressure Relief 3" 10 PSI	364-306-3	21.4 lbs



PRODUCT DESCRIPTION	PART NUMBER	WEIGHT
Valve 6" 4-Way Assy No Flanges	410-006-007	72 lbs
Handle For 4 Way Valve	412-060-005	1.45 lbs
Yellow Grip 1/4" Handle W/ Logo	120-060-002	0.05 lbs



PRODUCT DESCRIPTION	PART NUMBER	WEIGHT
Blower Package Flush Kit (Remote)	320-081-013	2 lbs
Tank Assy HDPE 1QT	320-082-003Z	0.60 lbs
Oil Tank Cap Black W/Tether	320-083-002	0.10 lbs
Oil Line BLK 1/4" ID 30R7 PER FT.	320-407-003	0.40



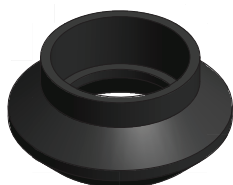
PRODUCT DESCRIPTION	PART NUMBER	WEIGHT
Thermometer Remote 200-400F 6' Copper 3/8" UNC Lead -Blower Exhaust	408-200-006	0.08 lbs
Gauge 2.5" Vac/Pres Liq Back Connection 1/4 NPT	408-200-007	0.45 lbs



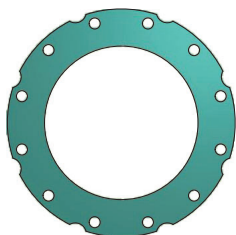
PRODUCT DESCRIPTION	PART NUMBER	WEIGHT
Gasket 12" LID BUNA	286-706-12L	0.65 lbs
Gasket 14" LID BUNA	286-706-14L	0.80 lbs



PRODUCT DESCRIPTION	PART NUMBER	WEIGHT
Float Ball 8" SS	414-800-SS	1.75 lbs



PRODUCT DESCRIPTION	PART NUMBER	WEIGHT
Clamp Worm 6" Ball Seats	416-600-1WC	0.02 lbs
Ball Seat 6" Buna	416-600-B	1.65 lbs



PRODUCT DESCRIPTION	PART NUMBER	WEIGHT
Gasket Ttma 6" Fiber	404-600-GF	0.10 lbs

NVE

National Vacuum Equipment

■ Part of Atlas Copco Group

Revised 01/2025



**DESIGNED.
BUILT.
SUPPORTED.**

Produced in the USA | Distributed World-Wide

Challenger **Series**
VACUUM PUMPS & BLOWERS

800-253-5500

sales@natvac.com

2707 Aero Park Dr. | Traverse City, MI 49686

