



# 1600 HEAVY DUTY VACUUM BLOWERS

## PRODUCT CATALOG

**Challenger** Series  
VACUUM PUMPS & BLOWERS



Designed. Built. Supported in The USA.

800-253-5500 | [www.natvac.com](http://www.natvac.com)

1600 High Vacuum Tri-Lobe Blowers .....3

1600 Pro Pak - Side Mount .....4

1600 Pro Pak - Top Mount.....5

1600 Top Mount .....6

1600 Diesel Engine Drive .....7

Components & Accessories.....8

**CONDITION OF SALES**

To view NVE’s Condition of Sales, scan the QR Code to the right of this text with your phone’s camera or visit <https://natvac.com/ordering-information/>



# 1600 Blower



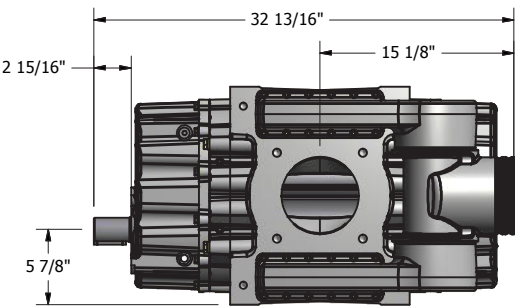
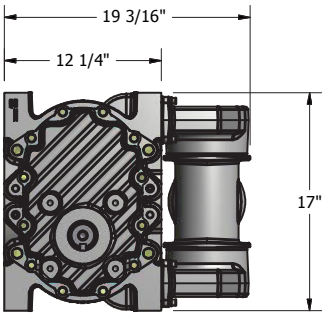
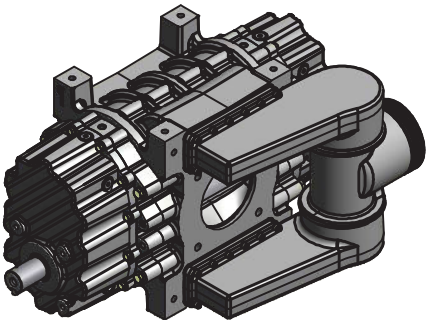
MADE IN THE USA

## Features

- Tri-lobe design with precision matching
- Oil-less operation
- Continuous duty performance
- Installation ready
- Ballast manifold available
- Designed, built, and supported in the USA

## 1600 CHALLENGER BLOWER | SPECIFICATIONS

Air Flow - Free Air	1600 CFM
*Maximum Vacuum	
Maximum Intermittent Pressure	10 PSI
*Operating Speed - Recommended	3600 RPM
HP Required @ 27" HG	95.4
HP Required @ 10 PSI	72.9
Porting Size	6"
Shaft Size (1/2" key)	1 7/8"



## PRODUCT DESCRIPTION

1600 Bare Shaft Blower

CALL

588 lbs

1600 Blower w/Ballast Manifold

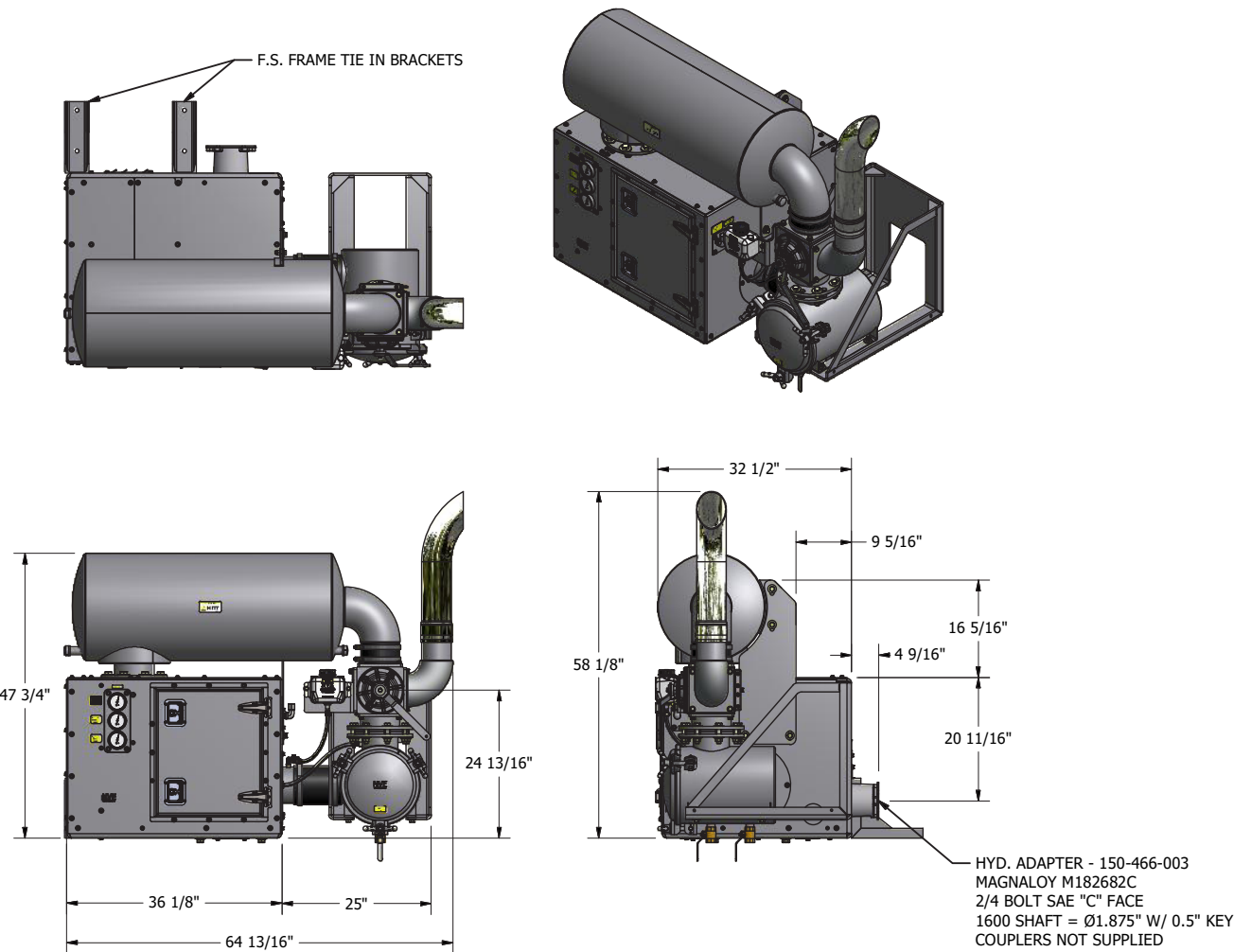
CALL

604 lbs

The maximum allowable operating vacuum will vary depending on R.P.M., ambient temperature, altitude and time running. The basic principle to keep in mind is - faster R.P.M., higher air temperature and longer run time all equal more heat in blower. When installing a NVE 1600 blower we recommend a normal R.P.M. of 3600. Other speeds are ok as long as exhaust gas temperatures read on the supplied thermometer do not exceed 380 degrees F.

Features

- Conveniently mounts on the side of the truck frame
- Equipped with 4-way valve, check valve, final filter, oil level sight eyes, temperature and vacuum/pressure gauges
- Available in hydraulic or gearbox drive
- Designed, built, and supported in the USA



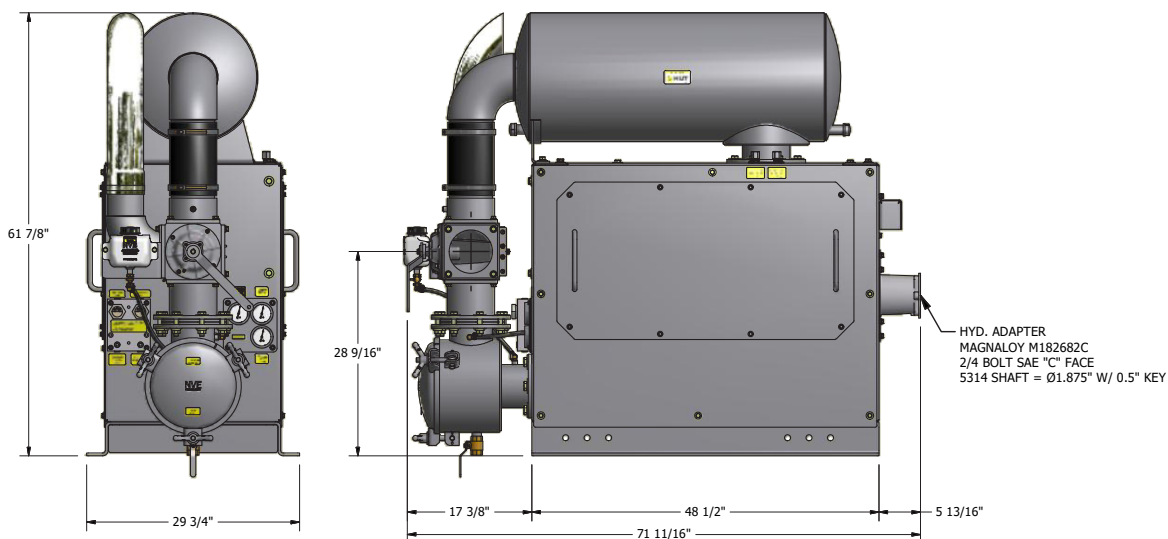
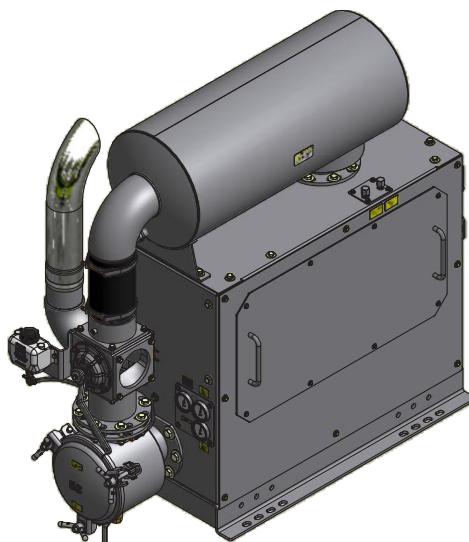
PRODUCT DESCRIPTION	PART NUMBER	WEIGHT
1600 Top Mount Hydraulic Drive CCW	147-1600H-006	1952 lbs
1600 Frame Mount Hydraulic Drive (Pictured Above)	147-1600H-007	1832 lbs
1600 Frame Mount Hydraulic Drive and Actuator	147-1600H-007-A	1832 lbs
1600 Frame Mount Gearbox Drive	147-1600H-008	1832 lbs

# 1600 Pro Pak - Top Mount



## Features

- Conveniently mounts behind the cab
- Sound dampening design for quiet operation
- Hydraulic ready
- Equipped with 6" 4-way valve, check valve, final filter, oil level sight eyes, temperature and vacuum/pressure gauges
- Easy maintenance - equipped with removable side panels
- Easy accesses to the oil fill and drain ports
- Designed, built, and supported in the USA



## PRODUCT DESCRIPTION

1600 Top Mount Hydraulic Drive CW

## PART NUMBER

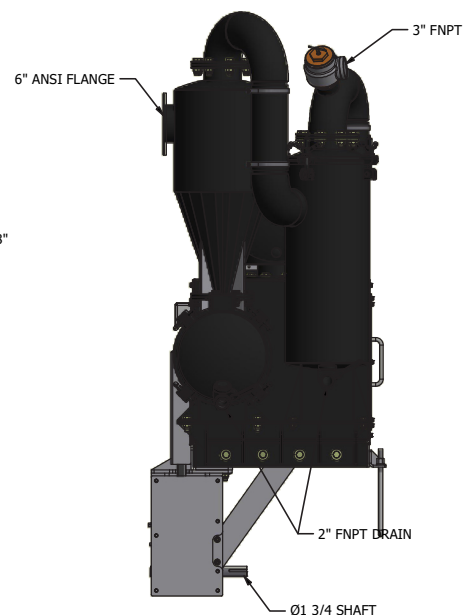
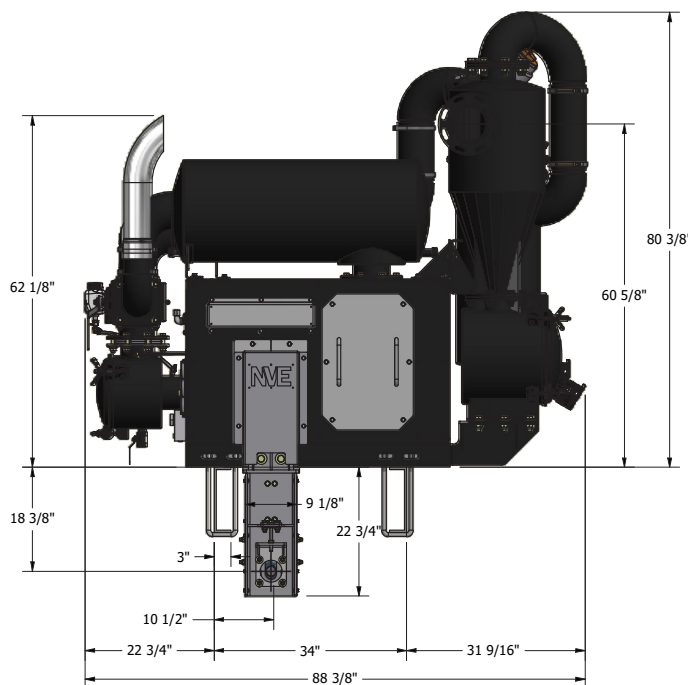
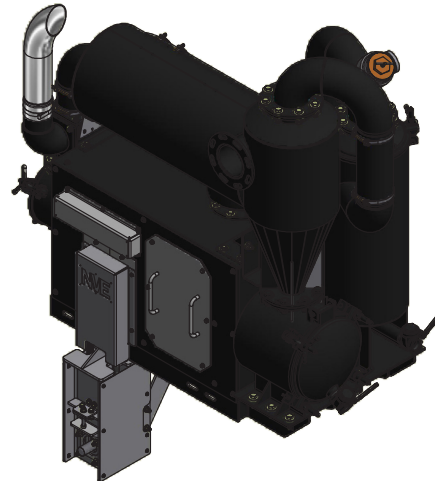
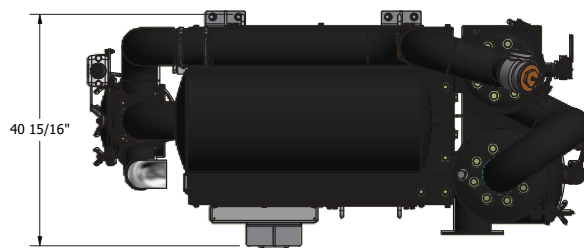
147-1600H-004

## WEIGHT

1904 lbs

## Features

- Conveniently mounts to the truck frame
- Equipped with
  - 6" 4-Way Valve
  - Moisture Trap
  - Stainless Steel Final Filter
  - Air Ballast Silencer & Exhaust Silencer
  - Cyclonic Grit Ridder
  - 3" pressure relief valve set at 10 psi
  - Temperature and vacuum/pressure gauges
- Designed, built, and supported in the USA



PRODUCT DESCRIPTION	PART NUMBER	WEIGHT
1600 Top Mount Belt Drive CW High Shaft w/ Moisture Trap and Cyclone	147-1600H-009	1842 lbs
1600 Top Mount Belt Drive CCW Low Shaft w/ Moisture Trap and Cyclone (Pictured Above)	147-1600H-010	1842 lbs
1600 Top Mount Hydraulic Drive CW w/ Moisture Trap and Cyclone	147-1600H-011	1842 lbs

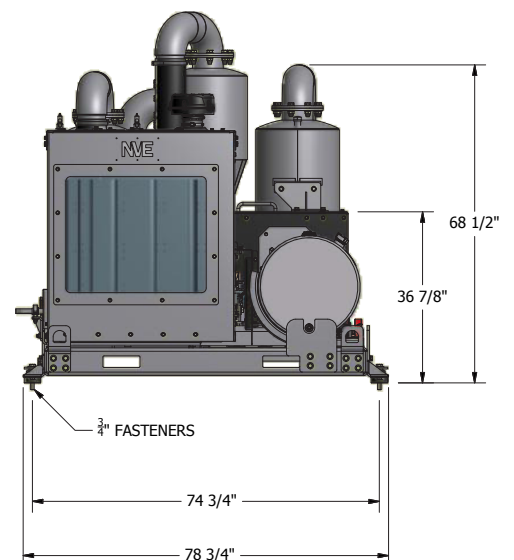
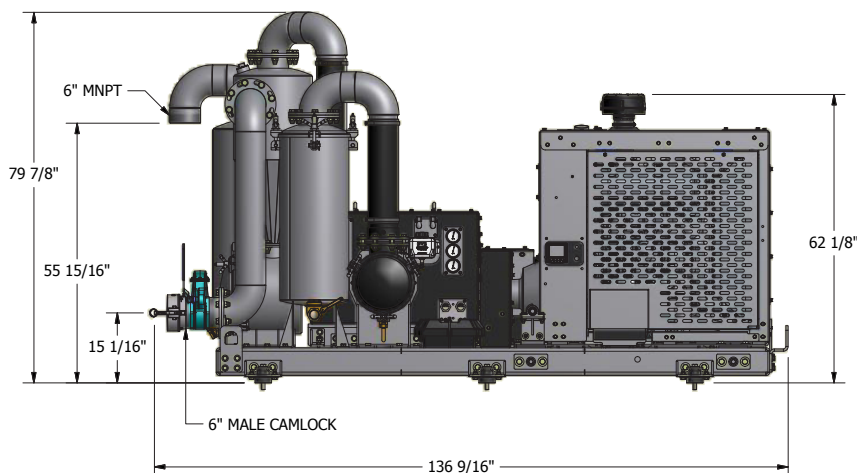
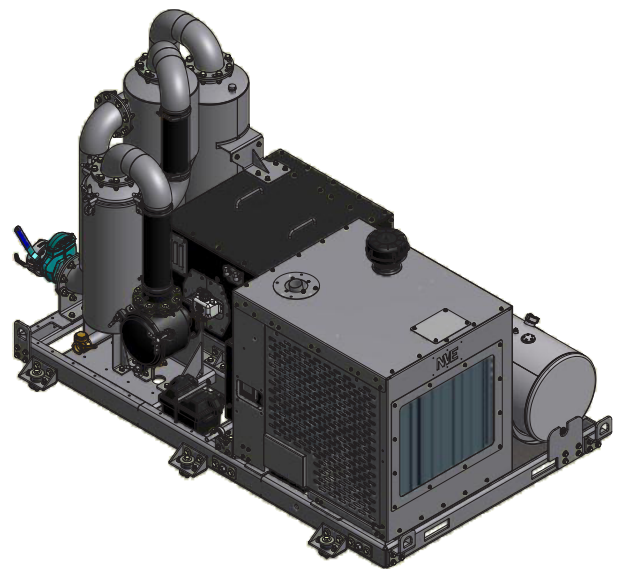
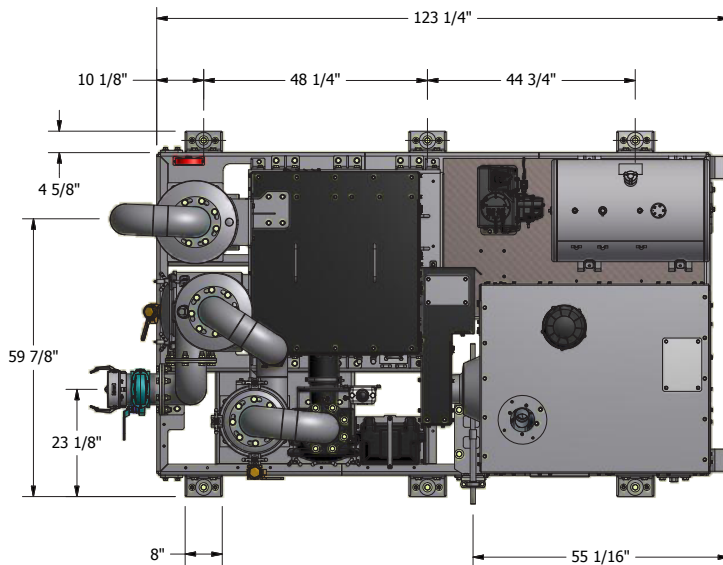


MADE IN THE USA

# 1600 Diesel Engine Drive

## Features

- 1600 CFM high vacuum blower
- Continuous duty at Max Vacuum
- 130 HP 4 Cylinder Doosan Diesel Engine
- Tier 4 final tested and approved package
- Turn-key control panel for ready to run delivery
- Heavy duty NACD clutch
- Solid, efficient belt drive
- Custom fabricated engine enclosure for ease of maintenance
- Integral final filter
- Ballast air and exhaust silencer
- Cyclone grit separator
- 25 gallon Moisture Trap
- 50 Gallon Fuel Capacity
- LED worklight
- Solid 6" channel frame with built in isolator mounts
- Approximate weight 5,950 lbs
- Designed, built, and supported in the USA



## PRODUCT DESCRIPTION

1600 Diesel Engine Drive

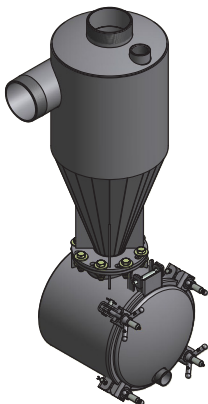
## PART NUMBER

147-1600H-013

## WEIGHT

5950 lbs

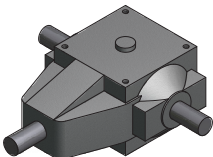




PRODUCT DESCRIPTION	PART NUMBER	WEIGHT
Cyclone 2400	222-2400-1	327 lbs
- Cyclonic Action Removes Grit and Debris From Airflow - 6" Plumbing		



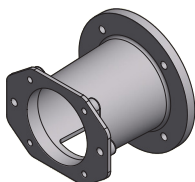
PRODUCT DESCRIPTION	PART NUMBER	WEIGHT
Moisture Trap Carbon	216-250-6NPT-C	186 lbs
- 25 Gallon - 6" NPT		



PRODUCT DESCRIPTION	PART NUMBER	WEIGHT
Gearbox 600 Series 1:2 Ratio Spiral Bevel	422-600-3	61.3 lbs



PRODUCT DESCRIPTION	PART NUMBER	WEIGHT
Hub Rexnord E30-1.75" BORE	424-E30-175	-----
Hub Rexnord E30-1.875" BORE	424-E30-1875	-----
Element Rexnord E30	424-E30-ELE	6.2 lbs



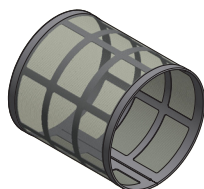
PRODUCT DESCRIPTION	PART NUMBER	WEIGHT
Hydraulic Adapter - SAE C face 2 or 4 bolt	150-466-003	7.2 lbs



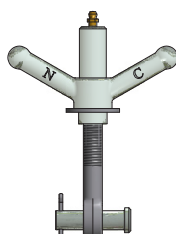
# 1600 Components & Accessories



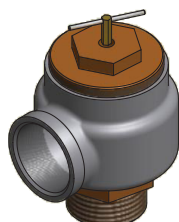
PRODUCT DESCRIPTION	PART NUMBER	WEIGHT
Belt 36MM QTPCII 2000	430-200-016	1 lbs
Belt 36MM QTPCII 2240	430-200-032	2 lbs



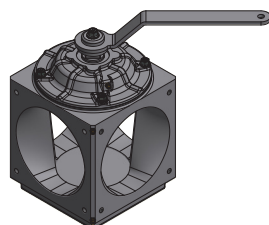
PRODUCT DESCRIPTION	PART NUMBER	WEIGHT
Intake Filter 1600	150-314-008	4 lbs



PRODUCT DESCRIPTION	PART NUMBER	WEIGHT
Wingnut Assy: Wingnut Eyebolt Clevis Cotter, Pin Sold in Sets of 6	284-KIT-C	1.45 lbs
Lubenut Assy: Lubenut, Eyebolt, Clevis, Cotter Pin Sold in sets of 6	284-KIT-CLN	1.55 lbs



PRODUCT DESCRIPTION	PART NUMBER	WEIGHT
Pressure Relief 3" 10 PSI	364-306-3	21.4 lbs



PRODUCT DESCRIPTION	PART NUMBER	WEIGHT
Valve 6" 4-Way Assy No Flanges	410-006-007	72 lbs
Handle For 4 Way Valve	412-060-005	1.45 lbs
Yellow Grip 1/4" Handle W/ Logo	120-060-002	0.05 lbs



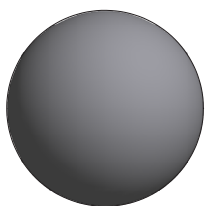
PRODUCT DESCRIPTION	PART NUMBER	WEIGHT
Blower Package Flush Kit (Remote)	320-081-013	2 lbs
Tank Assy HDPE 1QT	320-082-003Z	0.60 lbs
Oil Tank Cap Black W/Tether	320-083-002	0.10 lbs
Oil Line BLK 1/4" ID 30R7 PER FT.	320-407-003	0.40



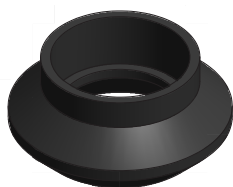
PRODUCT DESCRIPTION	PART NUMBER	WEIGHT
Thermometer Remote 200-400F 6' Copper 3/8" UNC Lead -Blower Exhaust	408-200-006	0.08 lbs
Gauge 2.5" Vac/Pres Liq Back Connection 1/4 NPT	408-200-007	0.45 lbs



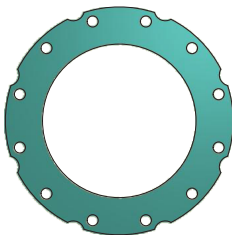
PRODUCT DESCRIPTION	PART NUMBER	WEIGHT
Gasket 12" LID BUNA	286-706-12L	0.65 lbs
Gasket 14" LID BUNA	286-706-14L	0.80 lbs



PRODUCT DESCRIPTION	PART NUMBER	WEIGHT
Float Ball 8" SS	414-800-SS	1.75 lbs



PRODUCT DESCRIPTION	PART NUMBER	WEIGHT
Clamp Worm 6" Ball Seats	416-600-1WC	0.02 lbs
Ball Seat 6" Buna	416-600-B	1.65 lbs



PRODUCT DESCRIPTION	PART NUMBER	WEIGHT
Gasket Ttma 6" Fiber	404-600-GF	0.10 lbs

## Notes

[illegible]

# DESIGNED. BUILT. SUPPORTED.

Produced in the USA | Distributed World-Wide

Toll Free 800-253-5500

24-Hour Fax 800-998-6834

P.O. Box 685 | Traverse City, MI 49685



# NVE

National Vacuum Equipment, Inc.

## Challenger Series

VACUUM PUMPS & BLOWERS